

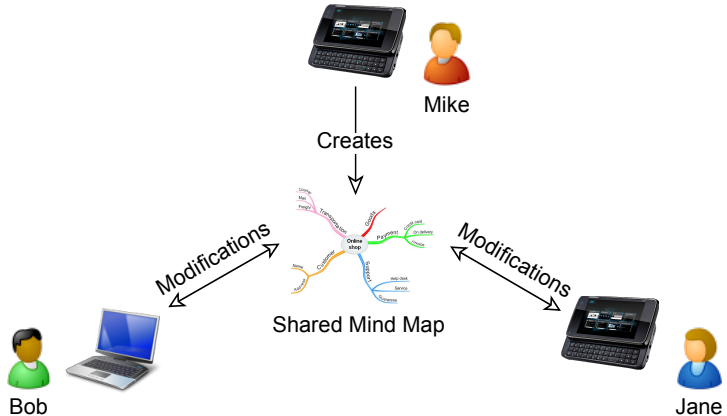
Interaction of HiveMind Application with Smart Conference System

Andrey Vasilev

Yaroslavl State University

November 11

HiveMind — Collaborative Mind Map Editor



Context Aware Mind Mapping

End-user values

- Add topic-relevant links
- Propose node contents
- Propose node structure

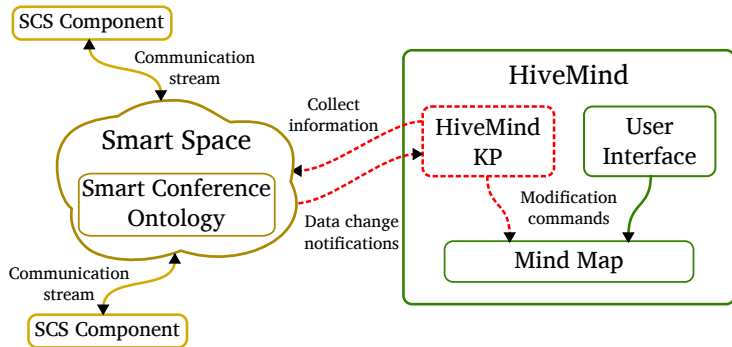
Smart Conference Integration

- Skeleton node structure
- Use-case adaptation

Use Case 1: Personal Mind Map for Memory Notes

- The initial mind map is filled with information about talks and presenters
- The mind map is updated with information about corresponding talks online
- A user joins ones comments and notes to the corresponding nodes of the mind map
- Mind map contains only information related to the person (e.g. no information about slides the person did not see)

Use Case 1: HiveMind and SmartConference Interaction

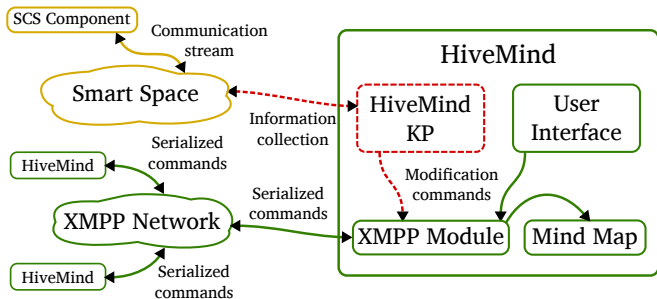


Use Case 2: Statistical and Contextual Information Collector

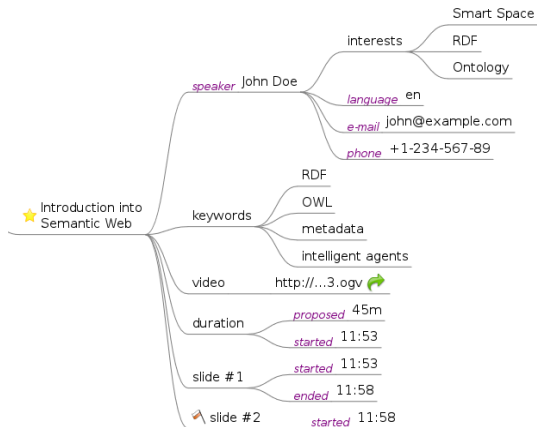
- Based on collaborative functionality of the HiveMind
- Mind map is being filled with **all** statistical and contextual information from Smart Space

Use Case 2: Statistical and Contextual Information Collector

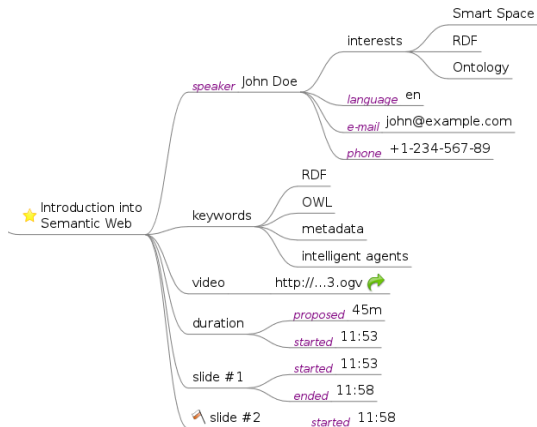
- Based on collaborative functionality of the HiveMind
- Mind map is being filled with **all** statistical and contextual information from Smart Space



Generated Mind Map Example



Generated Mind Map Example



Shortcoming

Mind map is filled with meaningless nodes

Slides Context Information

SCS Ontology

Main purpose is presentation control

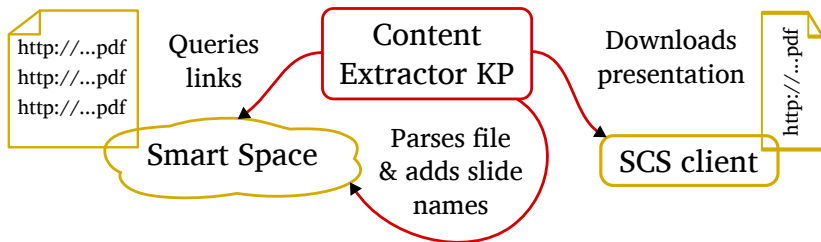
Enable support for SCS extensions

SmartScribo defines a way to comment presentation

Create special ontology

- Someone need to fill data according to ontology
- **Slides contain all necessary information**

Content Extractor KP



Ontology

- Presentation
- Slide

Presentation

- slideCount
- hasSlide

Slide

- number
- title

HiveMind Support

- "Slide #1" is changed with slide names
- Slide name is only added during the conference

CE Ontology

- Only supported during connection to smart space
- Being updated with the presentation update

Conclusion and Future Proposals

Results

- Effective mind mapping during the conference
- An example of making smart application

Future proposals

- SmartScribo ontology support
- Intelligent assistance during mind mapping